

Mezzanine Inspection Report (Scoping)

Date: 12/04/14	Station Name: D12 Landover	Mezzanine #: 067	Completed By: Mike Butler
Summary			
<p>Video scoping and pull string installation was completed for communication duct in upper faregate array. Video scoping completed for power duct in upper faregate array. The video scoping and pull string installation was completed in the power duct between Kiosk, Handhole 1, Handhole 2, Handhole 3 and AFC Panel.</p> <p>Scanning is not required at this mezzanine.</p>			
Scoping of Faregate Array(s)			
Task	Yes/No	Notes	
Communications Duct – Upper Faregate Array (7 gates)			
Was video scoping completed for the entire duct run?	Yes	Refer to "WMATA Landover 6 inch Comm. Faregate Video.avi".	
Were pull strings installed at all faregates in the array?	Yes		
Were there any obstructions or blockages? Provide details of type and specific location.	No		
Is the duct at capacity? Provide additional details about the dimensions of ducts and number of wires.	No	6" walker ducts in good condition and not at capacity (< 10wires).	
Communications Duct - Lower Faregate Array			
Was video scoping completed for the entire duct run?	N/A		
Were pull strings installed at all faregates in the array?	N/A		
Were there any obstructions or blockages? Provide details of type and specific location.	N/A		
Is the duct at capacity? Provide additional details about the dimensions of ducts and number of wires.	N/A		
Power Duct - Upper Faregate Array (7 gates)			
Was video scoping completed for the entire duct run?	Yes	Refer to "WMATA Landover 6 inch Power Faregate Video.avi".	
Were there any obstructions or blockages? Provide details of type and specific location.	No		
Is the duct at capacity? Provide additional details about the dimensions of ducts and number of wires.	No	6" walker ducts in good condition and not at capacity (< 10wires).	
Power Duct - Lower Faregate Array			
Was video scoping completed for the entire duct run?	N/A		
Were there any obstructions or blockages? Provide details of type and specific location.	N/A		
Is the duct at capacity? Provide additional details about the dimensions of ducts and number of wires.	N/A		


Scoping of Power Duct - Kiosk to AFC Panel		
Task	Yes/No	Notes
Kiosk to Handhole 1 (length: 5')		
Was video scoping completed for the entire duct / conduit run?	Yes	Refer to "WMATA Landover 6inch Power HH1 to Kiosk Video.avi".
Was pull string installed?	Yes	
Were there any obstructions or blockages? Provide details of type and specific location.	No	
Is the duct / conduit at capacity? Provide additional details about the dimensions of duct / conduit and number of wires.	No	6" walker duct in good condition and not at capacity (< 10wires).
Handhole 1 to Handhole 2 (length: 40')		
Was video scoping completed for the entire duct / conduit run?	Yes	Refer to "WMATA Landover 6inch Power HH1 to HH2 Video.avi".
Was pull string installed?	Yes	
Were there any obstructions or blockages? Provide details of type and specific location.	No	
Is the duct / conduit at capacity? Provide additional details about the dimensions of duct / conduit and number of wires.	No	6" walker duct in good condition and not at capacity (< 10wires).
Handhole 2 to Handhole 3 (length 5')		
Was video scoping completed for the entire duct / conduit run?	Yes	Refer to "WMATA Landover 6inch Power HH3 to HH2 then to HH3 to AFC Panel Video.avi".
Was pull string installed?	Yes	
Were there any obstructions or blockages? Provide details of type and specific location.	No	
Is the duct / conduit at capacity? Provide additional details about the dimensions of duct / conduit and number of wires.	No	6" walker duct in good condition and not at capacity (< 10wires).
Handhole 3 to AFC Panel (length: 60')		
Was video scoping completed for the entire duct / conduit run?	Yes	Refer to "WMATA Landover 6inch Power HH3 to HH2 then to HH3 to AFC Panel Video.avi".
Was pull string installed?	Yes	
Were there any obstructions or blockages? Provide details of type and specific location.	No	Evidence of rust and water inside duct.
Is the duct / conduit at capacity? Provide additional details about the dimensions of duct / conduit and number of wires.	No	6" walker duct; not at capacity (< 10wires).
Observations / Issues / Next Steps		
Handhole 3 is hidden beneath Salt Box, but is easily accessible upon removal of salt bags and box.		
Sign Off		
	GFP Representative	WMATA PRGM
Name:	Mike Butler	
Signature:		
Date:	12/04/14	

Photo #1 - Hand Hole 1 from Kiosk



Photo #2 - Hand Hole 1 in good condition and not at capacity

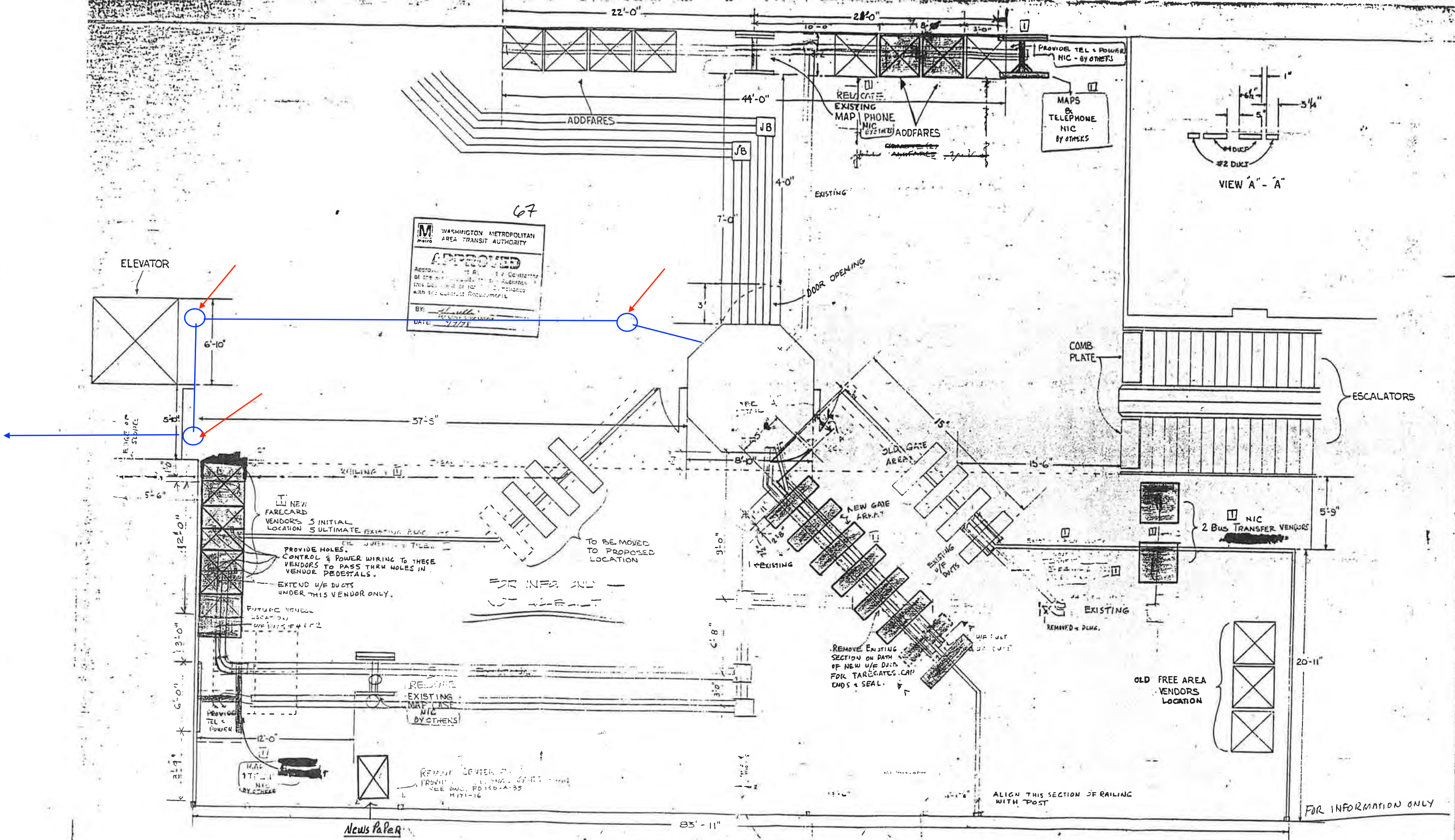


Photo # 3 – Hand Hole 3 under Salt Box and adjacent to elevator.



Photo #4 - Walker duct connection to AFC Panel in Room C108





67

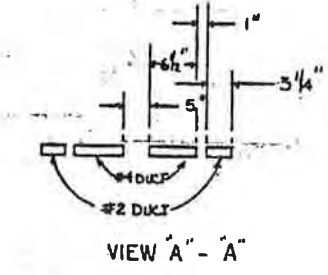
M WASHINGTON METROPOLITAN AREA TRANSIT AUTHORITY

APPROVED

Accepted by the Authority for the construction of this work in accordance with the contract requirements.

BY: *[Signature]*

DATE: 3/7/78



BECHTEL ASSOCIATES PROFESSIONAL CORPORATION - DC		
LANDOVER STATION MEZZANINE		
DRAWN BY: P. MILLER	CHKD. BY: T. VERRELLI	AFC EQUIP
CONTRACT # 2200TA	DATE: 4-18-78	SCALE: NONE
DRAWING NO: 1	REV. NO: 1	

NOTE:
 11 = REV. 1

#067

67